

JET ShowPlan Manager – Version 2.83 – 20 Oct 2022

Installation Info

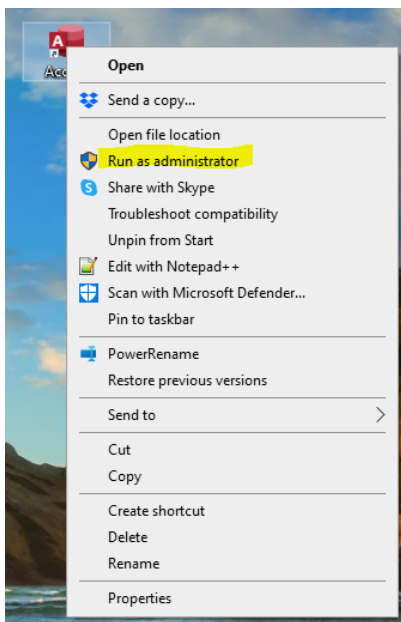
This version of the **JET ShowPlan Manager (JSPM)** is supplied as an **Access add-in** so it is available for use with all of your Access apps. There are separate versions of the **ACCDE add-in** for use with **32-bit and 64-bit Access** from **version 2010** onwards. If preferred, this can also be used as a standalone app.

To install the add-in:

1. Unzip and copy the **ACCDE** file **JSPM_v2.83.accde** (or **JSPM64_v2.83.accde**) and the **PDF** help file **JetShowPlanManagerHelp.pdf** to your **Access add-ins** folder. The folder path is usually: **C:\Users\YourUserNameGoesHere\AppData\Roaming\Microsoft\AddIns**

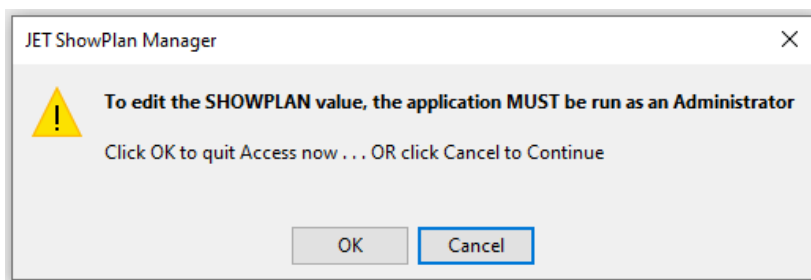
You will need to tick **Show Hidden Items** in **File Explorer** to see the **AppData** folder

2. Open **Access** from the **desktop shortcut** using the **Run as Administrator** option



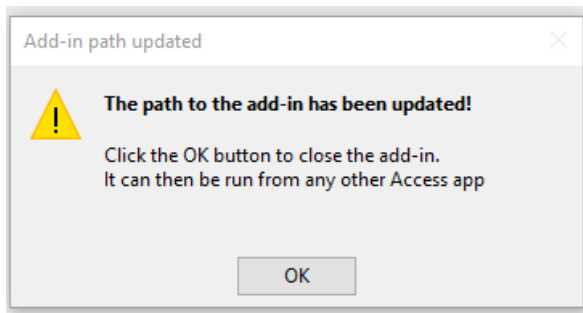
3. Browse to and run the **ACCDA** application from your **AddIns** folder

If you **omitted step 2** and **opened Access normally**, you will see this message



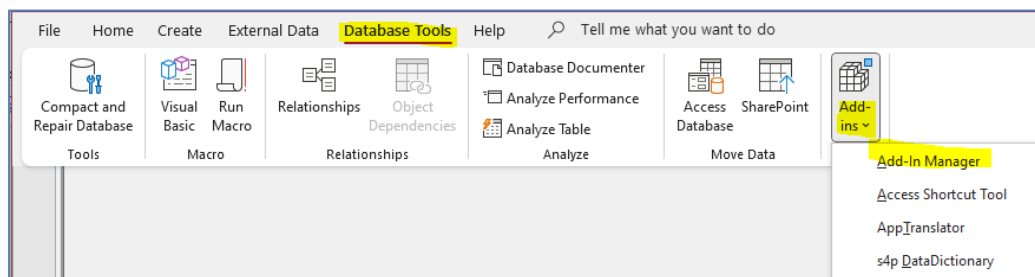
If so, click **Cancel** on this occasion

4. The first time the app runs, it will update the path settings in a system table **USysRegInfo**

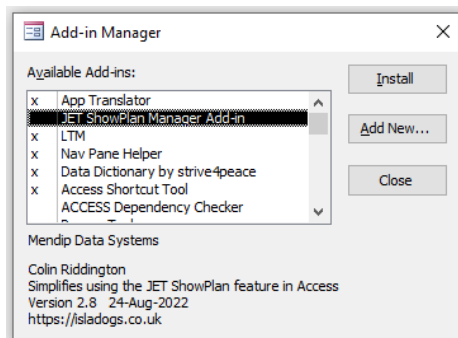


Click **OK** to close the app

5. Open any Access app and go to **Database Tools ... Add-Ins** on the ribbon



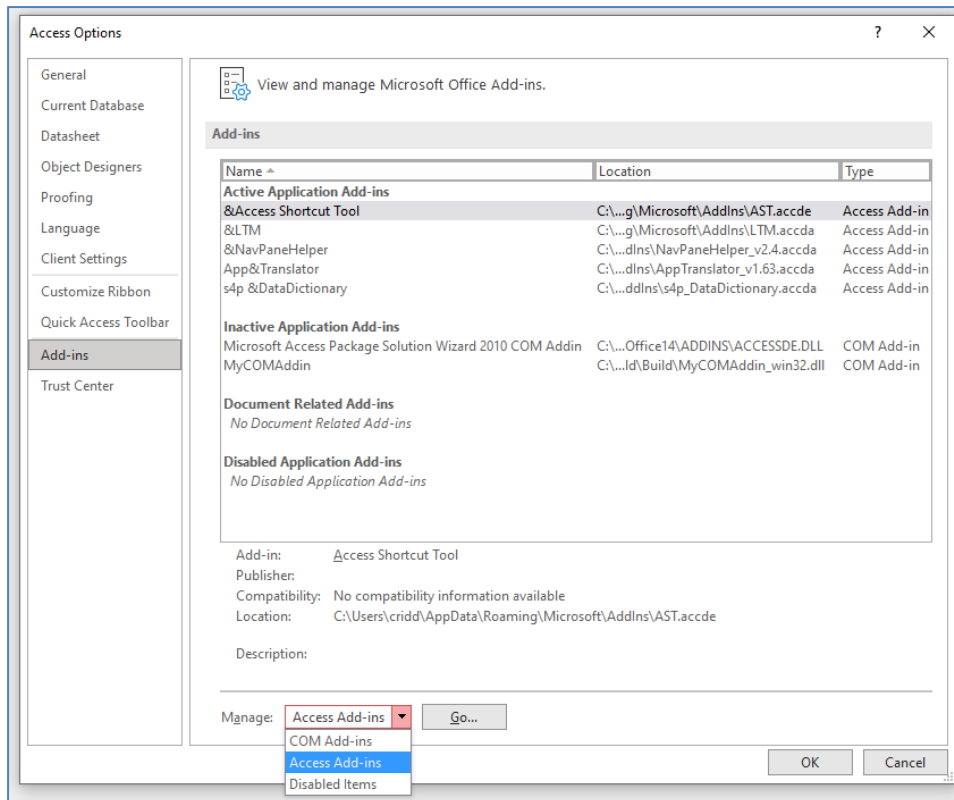
6. Click **Add-in Manager**. This dialog appears showing all the available add-ins on your workstation. **Installed add-ins** are marked with a **X**



Select **JET ShowPlan Manager** and click **Install** then click **Close**

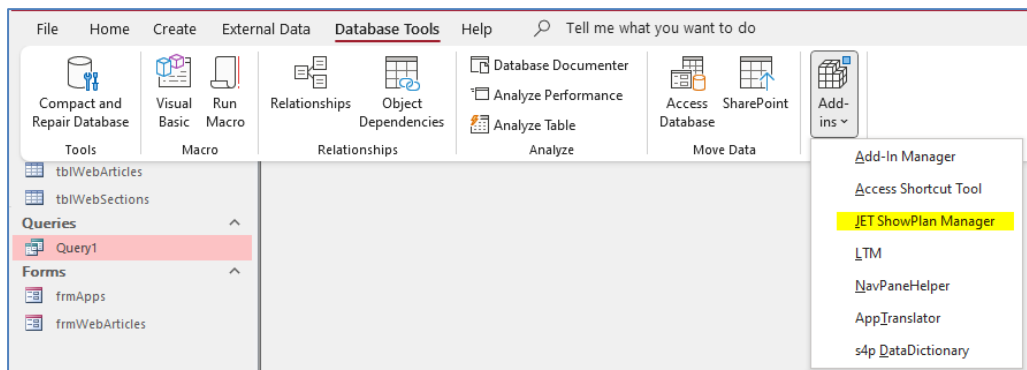
The **JET ShowPlan Manager add-in** is now available for use with all your Access apps

7. You can also install Add-Ins from the **File . . . Options** menu



Click **Access Add-ins** on the dropdown then click **Go**
The **Access Add-in Manager** will open - same as **step 6**

- To run the add-in, again go to **Database Tools ... Add-Ins** on the ribbon and select **JET ShowPlan Manager** from the list

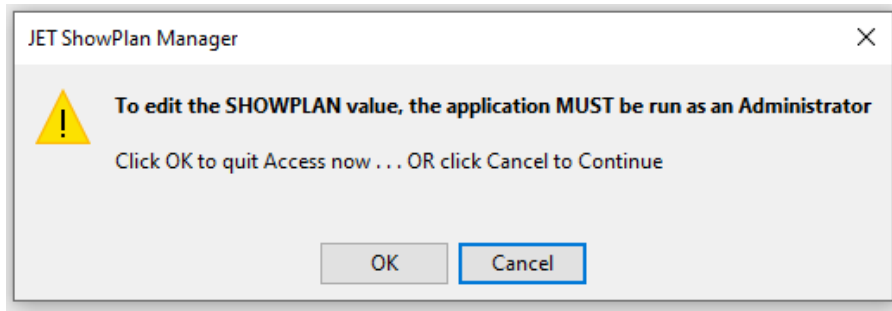


The **JET ShowPlan Manager** form will open in your app as a popup form.

NOTE:

Access MUST be run as an administrator in order to use the add-in to set / edit the **JET ShowPlan** registry key value

If this is not done, you will see this message:



9. If you close the **JET ShowPlan Manager** form at any time, just **repeat step 6** to **re-open it**

Thanks to **Dale Fye** for providing code which I used to help convert this utility to an **Access add-in**.

If you find this **free Access add-in** useful, please consider giving a **donation** to help offset the costs of maintaining my website. Thanks

Colin Riddington

Mendip Data Systems <https://isladoqs.co.uk>

20 Oct 2022